

Operation Manual

Jaguar Cub 6.6



Operation Guide

PLEASE READ this manual thoroughly before you run the Cub.

Reading this manual should give you the confidence in operating the Jaguar Cub 6.6 correctly and efficiently. If you feel that we have missed anything in this manual, please contact Solution World of Clean on 01209 204 343.

Never forget that this is an industrial machine and you are responsible for its safe operation and the safety of others around it.

Description

A high performance machine in the smallest modular design made.

This machine has a lot of the same features the larger machines have, including great vacuum and pressure.

Use as a carpet & upholstery cleaning machine or as a stain spotting machine. It also works as a booster for a larger machine (extra parts kit required) .

Operators can use either 2" or 1½" vacuum hoses.

At only 25Kg it is easy to manoeuvre and lift into your van and can be stored conveniently.

All in all, a powerful and versatile machine designed to run 25 to 50ft of vacuum hose.

Specifications:

Dimensions

- 31" H x 20" L x 14" W. Approx weight= 25Kg.

Pressure Pump:

- 300 PSI fully adjustable

Vacuum Motor:

- Unbelievable 10.2Hg Lift & 200CFM!

Tanks:

- Translucent 2x 30L. 2" inlet on waste tank with which you can use either 1½" or 2" hoses.

Wheels:

- Rear 10" double bearing foam filled x front 3" swivel castor

Amp draw @ 230V

- Pump.....0.7amps max
- Vac Motor.....4.3-7.4 amps max

Unpacking Equipment

Inspect to see that there is no exterior damage to packaging upon arrival. If so, please make the delivery driver/company aware and show them the specific damage. Take photos of damage upon delivery.

When receiving the machine during the winter months, the pump and all solution lines are drained prior to dispatch to avoid frost damage during shipment. Please allow the machine to achieve ambient room temperature before testing. You may also need to prime the pump. In this case, please refer to "PUMP PRIMING" further on in this manual on Page 8.

Quality Control

Each system is carefully built by hand in the UK. Each and every component is thoroughly tested in our plant before, during and after full assembly. Prior to dispatch, the system is fully "wet" tested to eliminate any possible defects of any kind. We are proud to point out that your machine meets the exacting standards of CE approval.

Vacuum Float

The vacuum float should be fitted at ALL times, failure to do so may cause water ingress of the vacuum motors and WILL invalidate your warranty.

IMPORTANT! The lint filter holding the white ball must be inspected and cleared of lint/fluff after every single job. This will ensure that your vacuum motor is working at its optimum and will prevent your motor from burning out prematurely

Installation of Vacuum Lid

IMPORTANT! The air-flow holes situated on the front lid (inserted part) are to face towards the rear of the machine. The bolt on the side of the lid should help to avoid the lid being positioned incorrectly, so the bolt should NEVER be removed. The consequences of the lid being placed incorrectly allows water to pass directly down the stack pipe, this WILL cause water ingress of the vacuum motor and damage it irreparably and WILL invalidate your 12 month warranty.

Switches

Note there are 2 switches located at the bottom & front of the machine base.

1. Vacuum Motor (upper switch)
2. Pressure Pump (lower switch)

Pressure Regulator (0-300 psi)

To increase flow rate/psi: Turn the regulator's adjustment knob clockwise (to the right).

To decrease flow rate/psi: Turn the regulator's adjustment knob anti-clockwise (to the left)

Solution Tank

There are two colour coded hoses within the solution tank, Yellow and Blue. The blue hose with a mesh filter on the end is the water feed hose that draws water to the pump, the yellow one is the flow return hose that re-circulates the solution when there is no demand at the wand.

Always make sure there is sufficient water in the tank when you run the pump and that this filter is kept clean and clear. Avoid allowing the pump to run dry, by making sure the blue hose filter is always below the water level. **Never fill the solution tank to the brim, in return this will stop you flooding the vacuum motor.**

CAUTION:

Avoid manoeuvring/lifting the machine when water is in either the solution, or waste tank. ALWAYS EMPTY the machine before travel/movement. Apart from Health and Safety issues, failure to do so may cause water to splash down into electrical components and cause a potential hazard. Damage may also occur and if so, your warranty will be invalidated.

It is also not advisable to move the machine up the stairs due to jarring the components. Your machine has been designed to run long hose lengths to enable work on multiple floor levels whilst leaving the machine in one position, more importantly, liability and personal health risks in terms of one's back, arms and the possibility of falling down a stairway. It is highly recommended to use additional hoses instead. Always lock the machine in position whenever not in sight of the operator or whenever there are children present.

Waste/Recovery Tank

The waste/recovery tank is designed to withstand extreme pressure that the Jaguar Cub 6.6 produces. The shape of this tank is a pivotal key to our extremely high pressure system and should not be internally modified in any way. To do so will invalidate your warranty.

The inside of the waste/recovery tank houses the vacuum stack pipe which leads directly to the high performance vacuum. The float chamber sits directly on top of the stack pipe.

On the front of the machine there is a black waste gate valve positioned 1" from the base of the tank. The purpose is to allow you to drain the majority of the recovered water from the tank without causing dirt & debris to become lodged inside the gate valve or to re-circulate through the vacuum motors.

Take care not to overfill the waste/recovery tank

Note:

We strongly recommend rinsing the waste tank on completion of every job.

Pump

Your pump is rated at 0–300 psi. The longevity of the seals and plunger of the pump head, and indeed the pump head itself can be increased by following a few simple rules:

1. In general, never use a detergent or powdered based product in the solution tank. Never use oxidisers (World of Clean SPM) through the pump head as this can cause cavitation within the pump and cause irreparable damage.
2. The only thing that should be allowed to pass through the pump head should be fresh water, (not exceeding 60 degrees C) or World of Clean Final Phase/Crystal Rinse/M-Power/Fabric 8/Odour Neutralisers.
3. DO NOT allow the pump head to freeze.
4. Always relieve the built up pressure from the machine and the solution hoses when shutting down, by depressing the valve trigger on the wand. Failure to do so may cause excessive pressure on the pump motor and the pump may be unable to start up on the next job! This may cause a “humming sound” when you switch the pump on which may burn out the motor.

Please note the pump manufacturer Pumptec recommends the plunger kit and seal kit are renewed every 500 running hours.

Pump Priming

To prime the pump and eradicate air locks, attach the solution hose to the high pressure solution outlet and the male quick connect end to the female quick connect situated on top of the solution tank if fitted. If not, use a spare quick connect or an open ended hose.

Ensure that there is enough water in the solution tank and the feed hose (with filter) is submerged and the filter is clean/clear. Switch the pump motor on and allow a few minutes for the water to fill the system. A change in sound will be apparent when the pump is primed and a continuous flow should be present. We advise this for the start of every day of use

IMPORTANT!

The float cut out WILL NOT activate with foam. It is strongly urged that “**World of Clean Defoamer Concentrate**” is used on every single job. Also, ensure that the float is clear of obstruction which may prevent it from operating correctly. Remember, vacuum motors that are damaged by foam/water ingress ARE NOT covered by warranty.

Important Information about “Cleaning Agents”

It is vitally important that you know what the ingredients are in your solutions. NEVER use solvents or oxidisers in your machine as these will damage your pump & pump valves almost immediately. They will also damage wand valves and regulators. (example of solvents is butyls, citrus cleaners etc) Harsh acid rinses are not recommended either.

The use of chemicals/solutions outside of the “World of Clean” range, used through your machine will invalidate your warranty for your Jaguar Cub 6.6. Many powdered detergents actually eat away and aggressively corrode the inside of the pump head, causing irreparable damage over a very short period of time. Solution World of Clean Ltd WILL NOT meet the cost to replace pump heads, seal kits and plunger kits damaged in this way. Warranty is based upon a return to Solution World of Clean. Any unauthorised repair/work on your machine without our written consent may invalidate your warranty.

Water Temperature

Limit water temperatures to 60 degree centigrade when running water through the machine pump. Temperatures higher than this may deform pump seals, valves, wand valves and disconnects etc and may actually cause internal cavitations of the pump head. They could also reduce pump and other related components’ service life, and will void warranties.

Troubleshooting

Loss of Vacuum

Take the vacuum lid off and set aside. Remove the float vacuum shut-off and set aside. Check that fluff/lint is not present on the filter. If not, switch on vacuum and check the stack pipe to ascertain that a good suction is achieved. If there is no vacuum but you hear the motor running, then it is possible that the internal hose fitting inside the machine has separated from the stack pipe or the vacuum motor itself.

1. Remove the waste tank via the 2 securing nuts from the base along with the top stainless steel handle.
2. Inspect for unattached pipe to the underside of the stack pipe and also the vacuum motor. Reattach and reassemble the machine and test again.

Pump Pressure Problems

If the pump is switched on and a constant flow of pressure at the wand is not achieved, it may be that the pump has been starved of water where the water has drained back out of the blue supply hose in the solution tank. This causes an air-lock. The simple solution is to ensure that the blue feed hose filter is clear of any debris and the hose is fully submerged in the solution tank. To rectify, attach an open ended male quick connect to the end of the solution hose and switch the pump on. As the pump runs, a pitch change should be heard after a while. Once this happens and a good steady flow of water is achieved, switch the pump off and remove the male quick connect and carry on as normal.

Lime scale build up may also be a factor, simply running Solution Final Phase acidic rinse through the system helps remove any build-ups.

If this hasn't worked, there could either be a water "feed" problem which could mean there is a kink in the feed line within the machine, restricting the pump head of water.

At worst, it could be that the pump needs a new plunger/seal kit which are readily available and are relatively easy to fit for a capable mechanic. We are always happy to supply and fit these for a nominal fee.

Pump Motor Not Running

On removing both tanks from the base,

- check for loose or disconnected wires,
- check the toggle switch and connections that control the pump.
- The motor may have burnt out because of wear or even an electrical spike in the home or building.
- The pump motor may have become excessively wet from water spilling from above when the operator has filled the machine.
- The off-cam bearing on the motor shaft & pump plunger may require greasing.

***PLEASE NOTE that if you experience a problem with a motor or pump motor not running on a particular extension cord line (that had been running prior), ALWAYS check the outlet first. Did you trip a breaker? Is the electrical outlet worn and therefore not making contact with the machine plug end prongs? ***

We strongly recommend the use of a RCD or circuit breaker with all electrical machinery

Vacuum Motor

It is imperative **NEVER** to allow water/foam to get into the vacuum motor. Check your machine regularly for high levels of wastewater, the high wastewater level shut off is NOT infallible. If the worst *should* happen, immediate remedial response should be:

- Empty the waste/recovery tank.
- Turn on the vacuum and once running, starve the suction a few times on the stack pipe.
- Allow the vacuum motor to run for approximately 15 minutes to dry out.
- Never spray “penetrates” or “inhibitors” into vacuum motor as this will seep through the electrical working of the motor and will damage them, thus voiding warranties.
- Ensure that when not in use, the lid is NOT replaced on the waste tank, thus allowing the vacuum motor to “Breathe” and prevent odour and condensation build-up within the recovery tank.

PLEASE NOTE: Your warranty is void if you introduce penetrates (WD40) into the airflow of your machine. By its very nature, the oil will penetrate through the motor seal/bearing and into the motor's armature (coils). This DOES cause irreparable damage and it is OBVIOUS when an operator has caused this sort of damage.

“DO NOT ADD WD40 OR SIMILAR PENETRATES TO THE INTAKE OF YOUR MACHINE”

Foaming Problems

If you are using an extremely foamy detergent, pre-spray or are cleaning a carpet that previously had been shampooed, you may find excessive foam in your vacuum tank. Foam will not activate the vacuum float valves or float switch (if fitted) and will blow through the motors and the exhaust. **This should be avoided at all costs as it can cause irreparable damage to the motors.**

Immediate remedial action upon drawing water/foam in through the motors is to dry-run the machine with the tank lid OFF, for at least 15 minutes. This however does not mean that the motors are out of danger of catastrophic failure. We highly recommend the use of **World of Clean Defoamer Concentrate** prior to cleaning and every time the waste tank is emptied.

Toggle Switch Stuck in Position

The Machine toggle switches are extra heavy duty. Toggle switches are based on a simple theory and design. Therefore, if it is stuck in position, it indicates that the toggle is jammed. Replacement at the earliest opportunity is recommended.

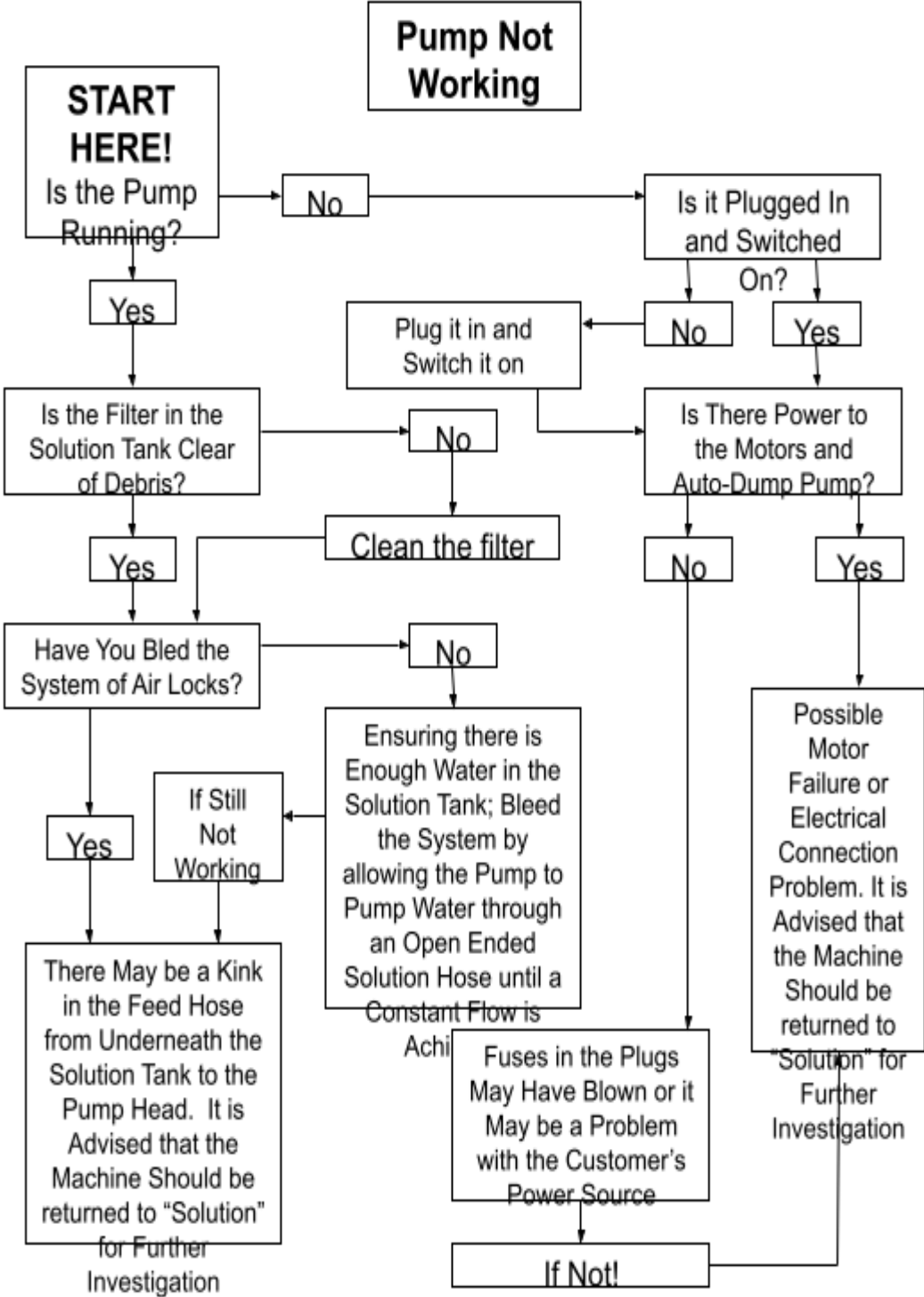
To Summarise:

During Carpet Cleaning:

1. World of Clean defoamer should be introduced initially and every time the waste tank is emptied.
2. Even if fitted with the electric waste high level shut off and using the auto-dump facility, it is advised to check your machine periodically to ensure there are no over-filling or foaming issues in the waste tank.
3. Ensure that the waste gate valve is fully down.
4. If fitted ensure that the waste tank bung jubilee clip is tight.

After EVERY Job:

1. Rinse out the waste tank, being careful not to allow water into the stack pipes
2. Clean ALL filters (stack pipes and auto-dump) clear of debris and fluff/lint.
3. Remove the waste tank lid and rinse until thoroughly clean and free of lint and debris. Then place it on the "Solution" tank.
4. Run the vacuum motor for 3-5 minutes with the lid off.
5. **DO NOT** put the waste tank lid back on the waste tank; this allows the motors to 'breathe'
6. When not in use, store your machine in a dry and frost/humid free area.



Declaration of Conformity **CE**

We Solution World of Clean Ltd
Unit I Indian Queens Industrial Estate
Warren Road
Indian Queens
Cornwall
TR9 6TL

Declare that the product Jaguar Cub Extraction Machine
Has been Manufactured in conformity with the following standards and specifications

BSEN 60335-1

BSEN 60335-2-68

EN 55014-1

EN 55014-2

BSEN 61000-3-2

BSEN 61000-3

BSEN 50366

And complies with 2014/35/EU Low Voltage Directive
2014/108/EC Electromagnetic Compatibility (EMC Directive)
2015/863/EU ROHS Directive

A full technical file is held by Solution World of Clean Ltd

Signed for and on behalf of Solution World of Clean Ltd

Nick Robertson Vousden



Managing Director Solution World of Clean Ltd Cornwall UK

Revision Aug 2022